



# Temperature sensor

4-20mA | 0-5v | 0-10v signal output





Free maintenance  
of genuine products

# IP65 high protection enclosure

The equipment can also  
work normally under severe  
environment such as dust,  
rain and snow



# Quality probe

When the temperature drops in high humidity situation, condensation will occur. Water drops adhere to the sensor, which seriously shortens the service life of the probe. Our company has solved this problem from the material.



✓ Waterproof

✓ Moisture-proof

✓ condensation prevention

# Easy to deal with various occasions

Applicable to agricultural shed, underground pipe gallery, warehouse, industrial workshop and machine room



# Industrial sensor platform

OMNI-IoT Complete Solution Provider



- IoT devices
- APP development customization
- Intelligent background management
- Complete solution development

## Support APP customization

Monitoring, reporting, storage and other one-stop services to easily create an independent and exclusive online cloud platform.



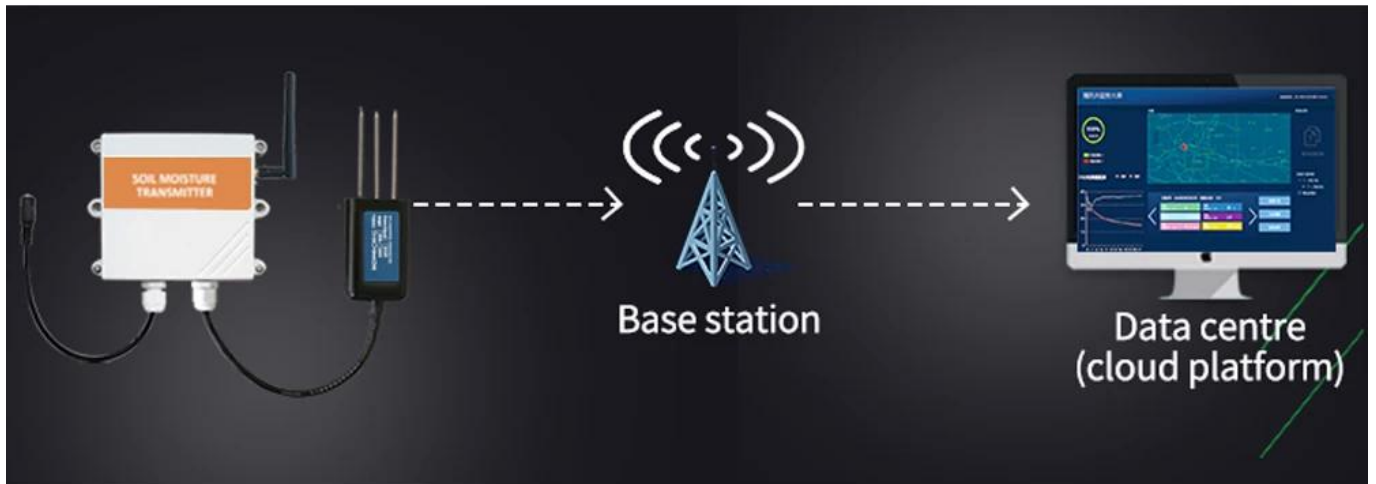
SMS alert



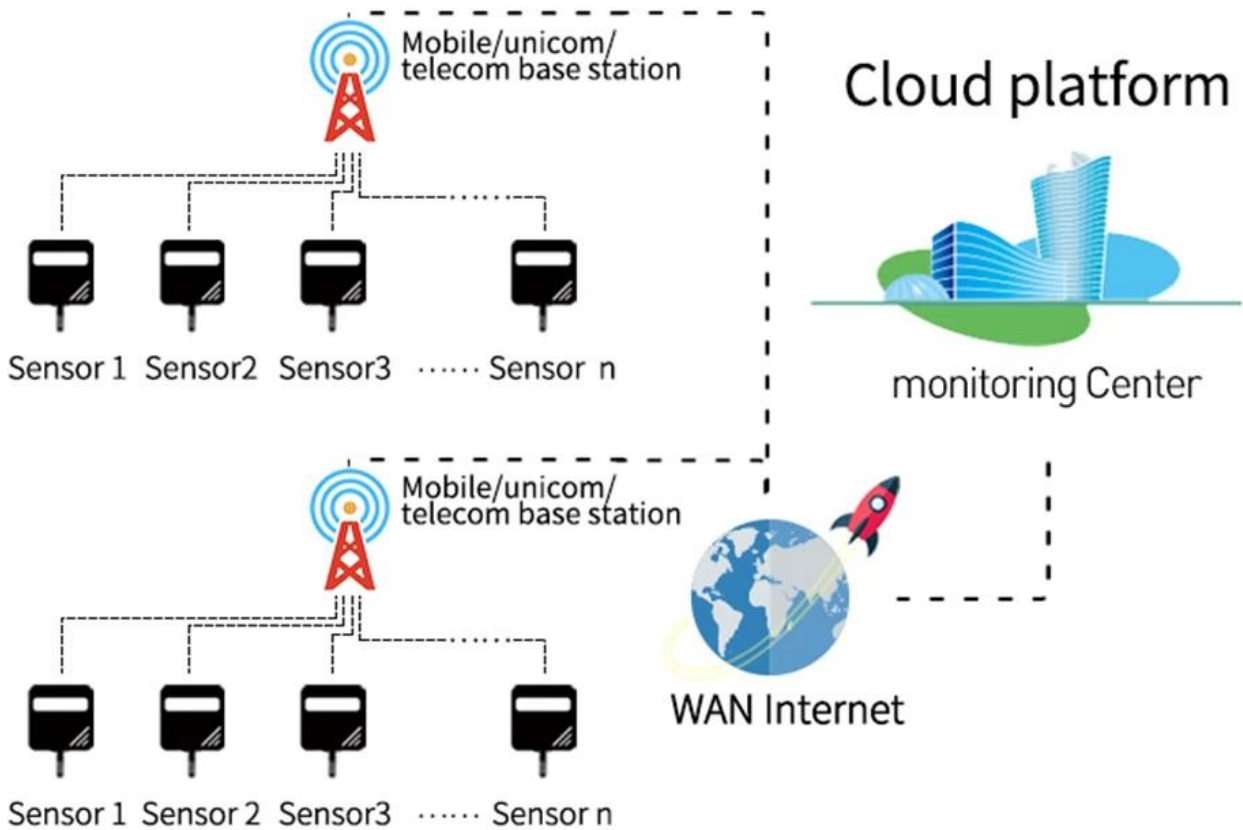
Mail alert



# no wiring

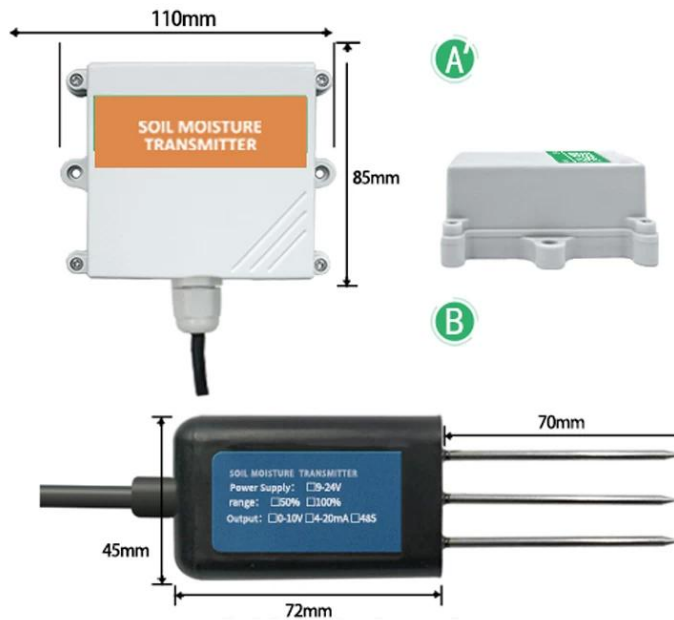


## DATE CAN BE REPORTED AUTOMATICALLY



# Product parameters

## NB-IoT



Parameter	content
Power supply	Built-in lithium battery
Battery working time	≥3years
Reporting interval	≥10mins
Communication system	2G/3G/4G/BN-IoT
Response time	≤15s
Protection level	Control box IP67/senor IP68
Installation method	all buried or probes are fully inserted into the measured medium
temperature measurement range	-40°C-80°C (customizable)
moisture measurement range	±5°C
moisture measurement accuracy	reading±3% (0-53% within the scope)
	reading±3% (53%-10% within the scope)



# GPRS/4G

Parameter	content
DC power supply	9V-24V DC
product power consumption	<0.4W
transmission interface	GPRS/4G wireless signal transmissio
setting up interface	GPRSnetwork configuration GSM SMS configuration
Signal support	2G/3G/4G/BN-IoT
Installation method	all buried or probes are fully
Protection level	inserted into the measured mediumIP68
Response time	≤1s
moisture measurement range	0-100%
moisture measurement accuracy	reading±3% (0-53% within the scope)
	reading±3% (53%-10% within the scope)
temperature measurement range	-40°C-80°C
temperature measurement accuracy	±5°C



