

USB rechargeable programmable bicycle wheel light

Get 100% Brighter & Safe Bicycle Spokes & Rims!

Production Introduction of the [smart bicycle light](#)

- ★ 64pcs ultra-bright 5050 RGB led form two light bar.
- ★ PC+ABS transparent long-lived material.
- ★ Size of the light bar is 500*30*20MM with weight is 260g.
- ★ Two ends of the light bar fixed on spoke with clip and screws easy installation and quick release.
- ★ Cycling speed needed only above 15km/hour can show complete picture
- ★ User can program or import total 21 kinds of colorful picture or words into the light with software download from our web, picture format can be JPG, PNG, BMP.
- ★ Provided DIY Software can be worked under WINDOWS7 XP , operation is easy and simple.
- ★ Prism reflection technology achieved 64 led work out 128 led same flash effect, pictures can be displayed on both side of cycle.
- ★ Work with rechargeable Lithium - ion 950 mAH battery, can be worked continuously above 8-10hours, just pull of the battery with USB plug from box for charging by PC or mobile charger.
- ★ Manual and intelligent induction button control light to work on or off automatically to save battery when wheels stop.
- ★ Water-proof level is IPX6, working normally in rainy day.

Product Features

1. Waterproof design

2. DIY any pattern or word, for example company logo

3. Rechargeable for recycle use

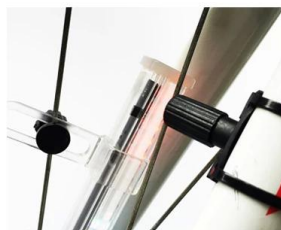
64pcs ultra-bright



PC+ABS

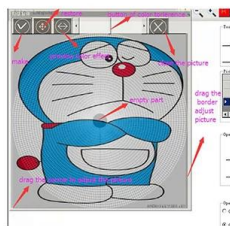
Size of the light bar is
500*30*20MM with
weight is 260g

Easy installation



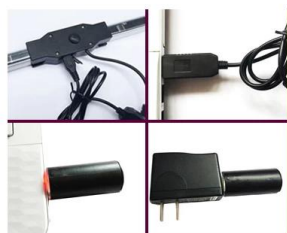
Cycling speed needed only
above 15km/hour can
show complete picture.

Provided DIY Software



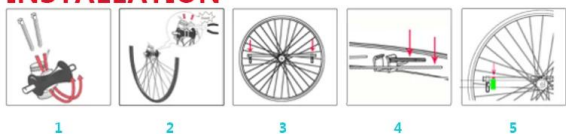
Prism reflection technology

Rechargeable



Water-proof level is IPX6

INSTALLATION



1. Fix battery box on hub by nylon cable tie (figure 1)
2. Pull tight the tie and cut off the extra part.(figure 2)
3. Put the light bar upper the hub ,making the center grooves of the light bar corresponding the convex grooves of the hub , fixing the two plastic clamps on light bar .(figure 3). Proper steps are screws- fix clamps-spoke-nut ,then tightened screws.
4. Adjust the two clamps,pls note the clamp wing should be parallel mounted on spoke , so that will ensure the light not swing when riding.(figure 4)
5. Fix the magnate sensor on fork tightly for font wheel,while fix it on chain stay for rear wheel, ensure the direction of magnate sensor facing to the black sensor on the light bar, the distance of two sensors should be no more than 10mm, otherwise the light can not work normally . . .(figure 5)

Product Picture

SUPER COOL LED BICYCLE WHEEL LIGHT



Super cool LED glow sticks USB rechargeable programmable bicycle wheel light diy spoke lights. Get 100% Brighter & Safe Bicycle Spokes & Rims!

