

## **Smart Bluetooth Cable Lock High Strength Steel Wire Chain Lock App Control Auto Alarm**

Omni smart cable lock, is a smart keyless lock with more smart abilities. It is to lock without key, easier and faster, one second to buckle, no need to find the key and prevent complication. And it's very environmental, protection PVC materials. Use thickened wire to ensure the cable locks are very strong and sturdy.

This type of smart cable lock is designed to enhance security and convenience for various applications, such as securing bicycles, motorcycles, or other valuable items.



# BLUETOOTH SMART CHAIN LOCK

S E C U R I T Y   E V E R Y W H E R E

PVC surround	Alloy wire rope head	High-strength steel wire	Lock without key
-----------------	-------------------------	-----------------------------	---------------------



Thickened  
wire rope



Alloy lock  
cylinder



PVC  
surround



Free  
stretch

# EXQUISITE WORKMANSHIP

OMNI Bluetooth cable lock,through QB/T 1001-2006, GB2155-2008  
double standard test,guard your travels



B level lock



GB international  
certification



QB Industry  
standard certification



HOT

# MULTI-APPLICATION SCENARIOS

MOTORCYCLE/EBIKE/BIKE/DOOR  
ETC WIDELY USE

---



Motorcycle



Ebike



Bike



Scooter



Door

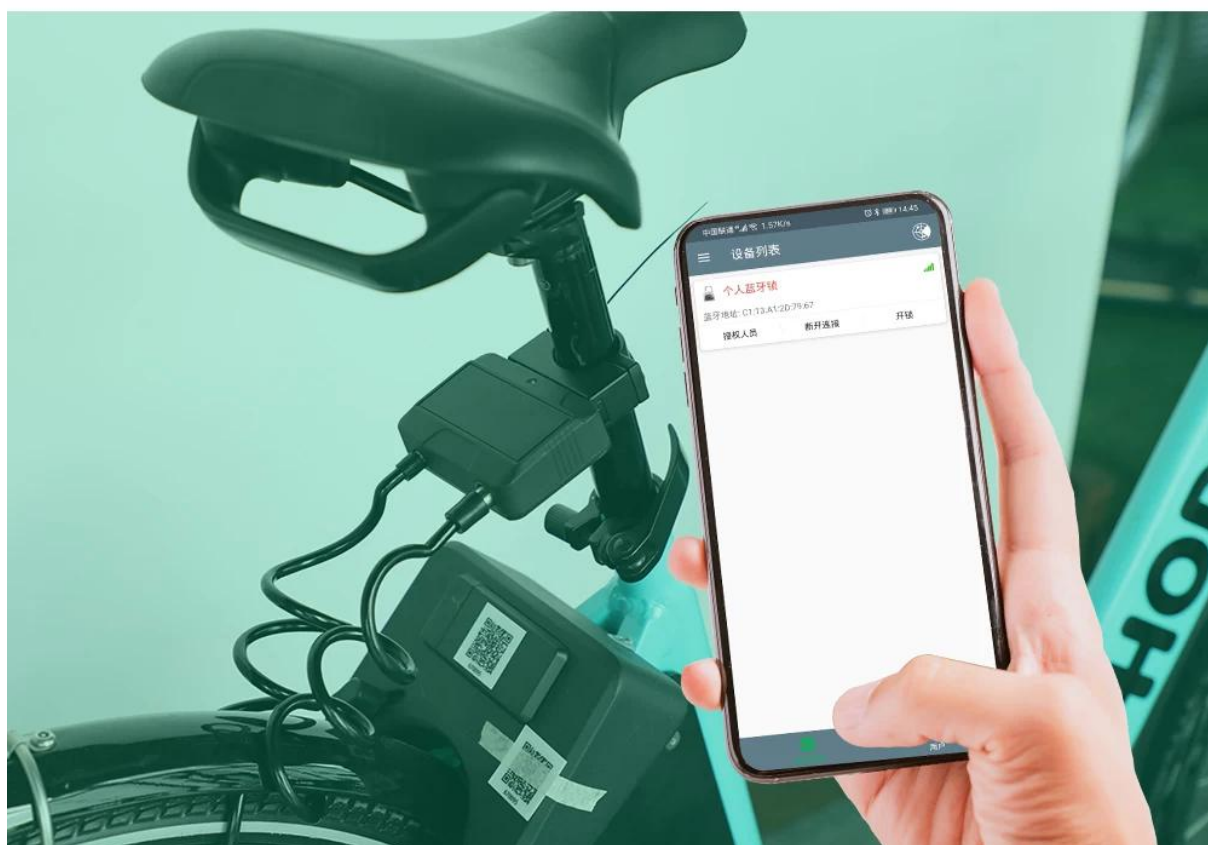


Baby stroller

NEW

# APP CONTROL ONE STEP AHEAD

Bluetooth connection, fast unlock  
rear time shows Power

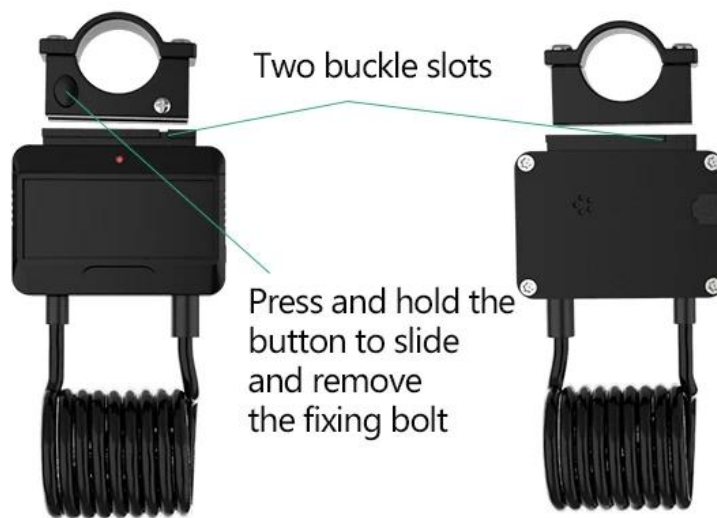


HOT

# DOUBLE FIXATION

## SLIDING AND DETACHABLE

Two buckle grooves on the front and back are double fixed, more stable and strong

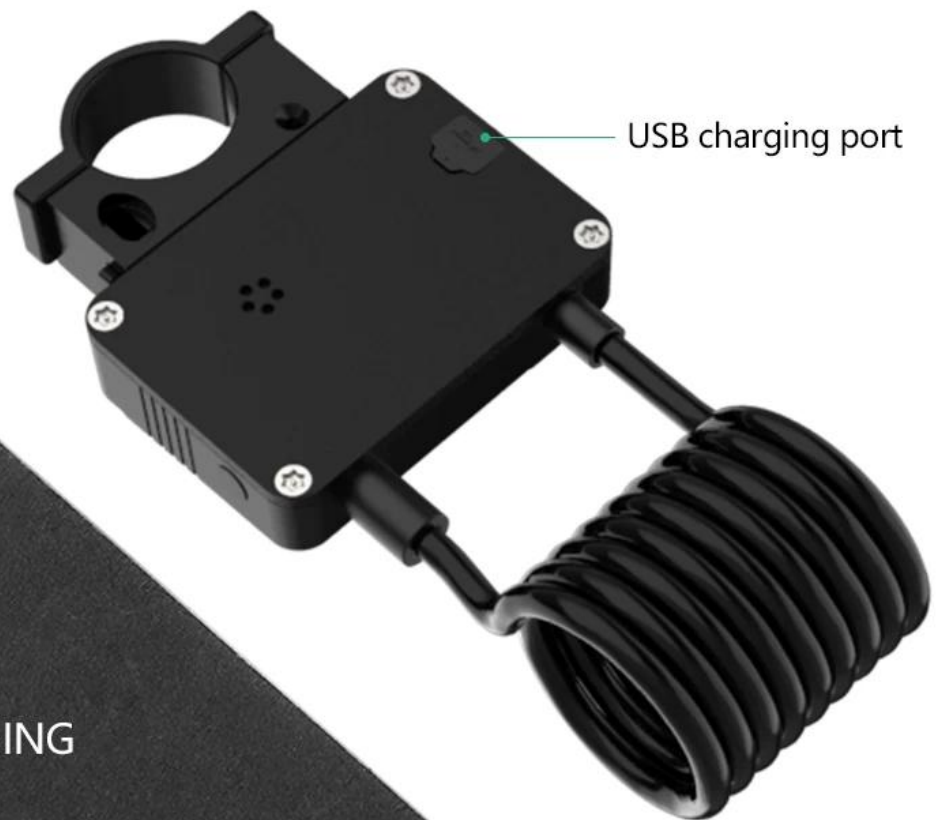




# 700mAh

## USB FAST CHARGE

Built-in 700mAh polymer lithium battery  
to meet daily needs,  
USB fast charging, convenient and safe



### ENDURANCE

Long battery life  
90 days

### CHARGING TIME

2~3 hours

### MULTIPLE CHARGING MODES



OWN

# SUPER WATERPROOF RIDE IN THE RAIN

Normally use in light rain, Waterproof: IP66



More than 100000+ testing



HOT

# SHARE ANYTIME

## REMOTE AUTHORIZATION

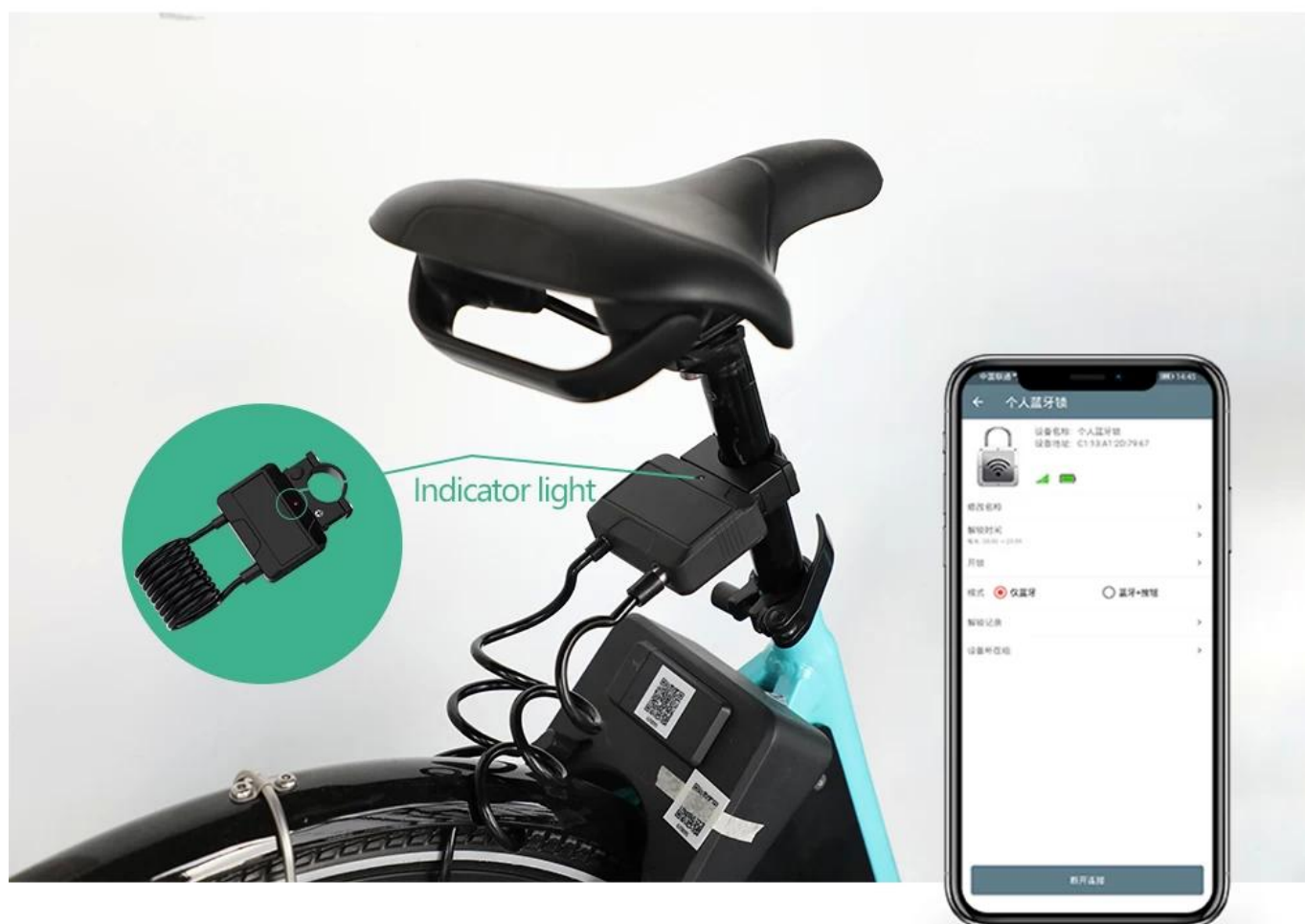
Share to family and friends, one device  
happy everyone



NEW

# AUTOMATIC ALARM SAFE AND WORRY-FREE

Abnormal movement, red indicator light flicker



Red indicator light alarm



Mobile phone  
receive notify

# SMART CABLE LOCK

## THICKENED WIRE ROPE STURDY AND DURABLE



SUPPORT  
CUSTOMIZATION

(6~18mm)

Thickness of steel wire and thick design  
of leather case, tough and tough



STRENGTH  
IMPROVEMENT



TOUGHNESS  
IMPROVEMENT

6mm thickness





# ALLOY WIRE ROPE HEAD

## HIGH STRENGTH ANTI-THEFT

Alloy steel lock, sturdy, safer and more assured



## About Omni

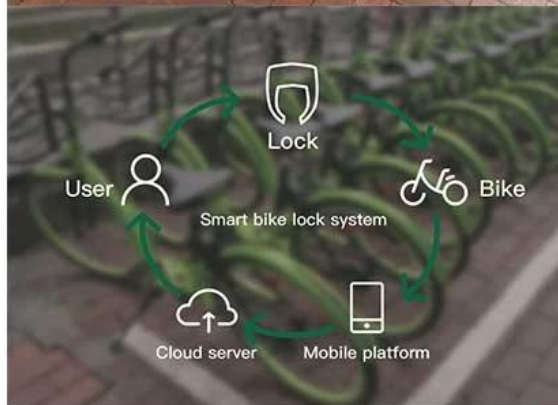
Shenzhen Omni Intelligent Technology Co., Ltd specializes in the products of wireless communication, artificial intelligent, sensor technology, which is a national high-tech enterprise integrated the development of hardware, software and system solutions. Omni products has been popular more than 100 countries and districts and the product ranges are: IoT solutions, [smart parking management](#), [smart sharing bicycle system](#), [sharing electric scooter system](#), smart home, urban mobility solutions, smart personal products and other artificial intelligent hardware and APP, server program, backstage management system.

Omni is dedicated in providing the optimal smart products, solutions and services for both domestic and global customers by adhering to the OMNI philosophy "Technology Innovation, Product Updation, Service Concentration".

# The company cases

## Intelligent riding system solution

Sharing bike



Sharing parking



Sharing scooter



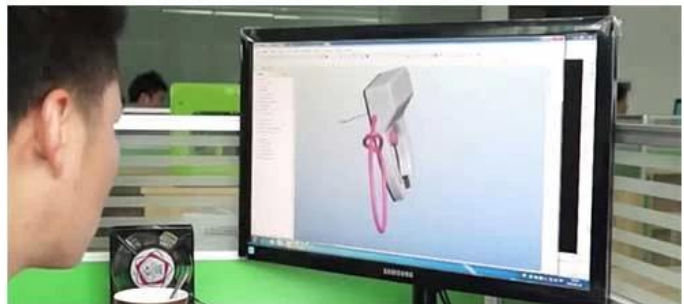


# The strength of company

Sales team



Engineering R&D



Production plant

