

# Your lock has the following hidden dangers

ARE YOU STILL NOT RESOLVED?



Too many keys, inconvenient to carry



Thief is easy to pry lock



Mechanical keys are easily damaged



File stolen



Lost key



Employee turnover key



**New trend**

# NEW SMART BLUETOOTH CABINET LOCK HELPS YOU

Keep ingenuity and innovate

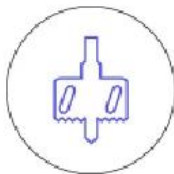


# BLUETOOTH FAST CONNECTION MOBILE PHONE CONTROL

Thickened lock cylinder · Bluetooth unlock  
Anti-lock dead



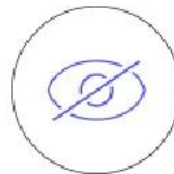
Suitable for drawers  
single / double cabinet  
doors, office cabinets



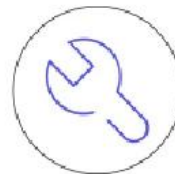
No holes



Stainless  
steel bolt



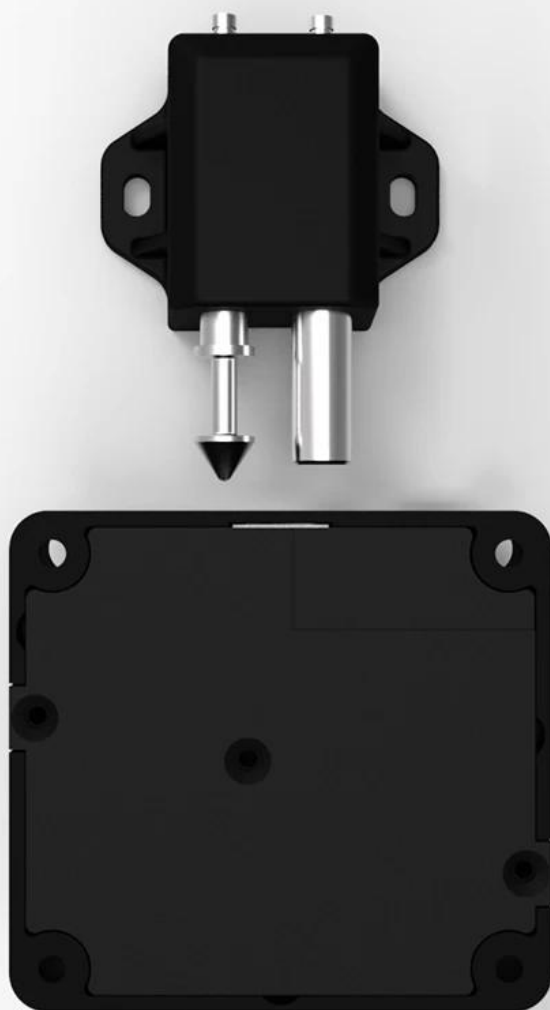
Invisible  
concealed



Easy  
installation

# THICKENED SOLID STAINLESS STEEL BOLT

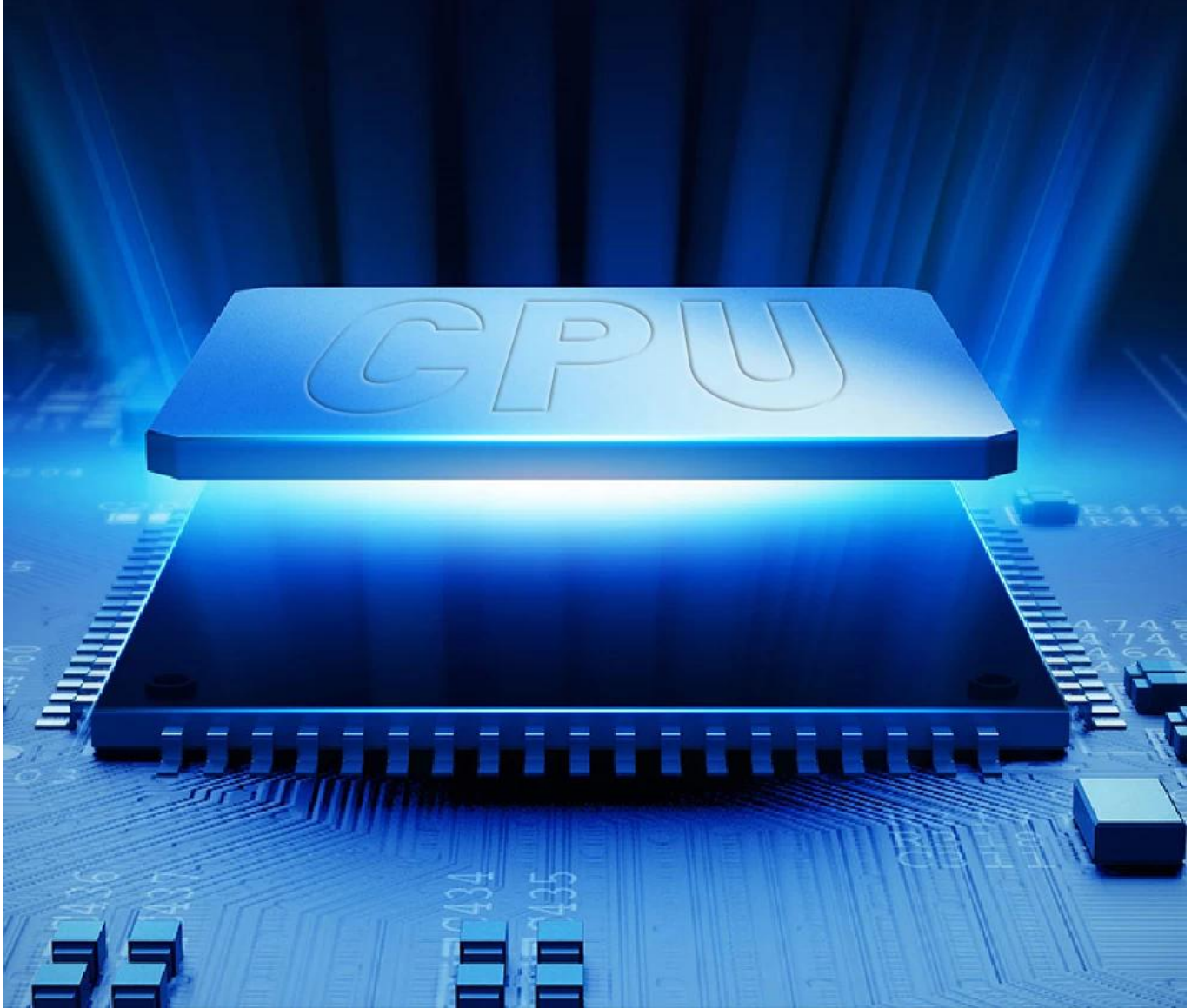
The safety factor of 8.5mm solid  
steel bolt is comparable to safe



# MATCH ITERATIVE CPU

ADOPT NEW ITERATIVE PROFESSIONAL  
GRADE CPU BLUETOOTH 4.0 MODULE

FASTER DATA TRANSMISSION, RESPONSE TIME $\leq$ 0.5S



# LOW BATTERY WARNING AND PREVENTION SYSTEM

Alarm in low battery state and Bluetooth unlock to prevent locking, the lock is in normally open state



# RICH APPLICATION SCENARIOS

Suitable for many types of furniture



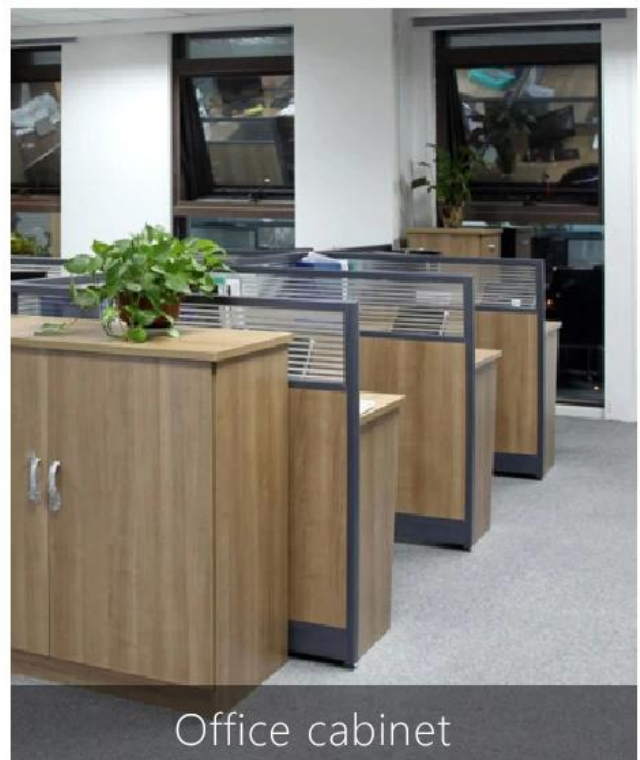
Bedside table



Lockers



TV cabinet



Office cabinet

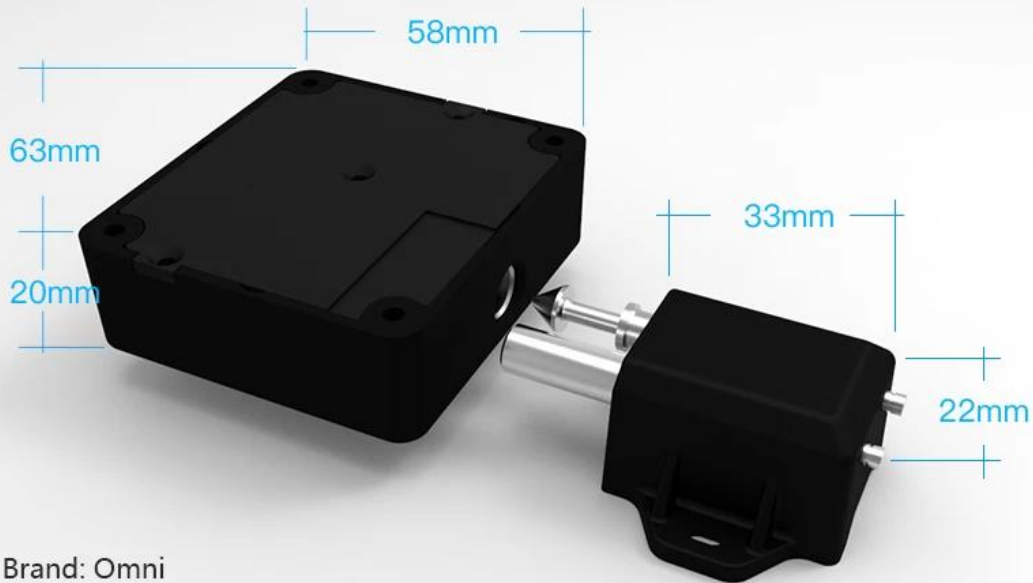
# MAINTAIN APPEARANCE

No punching concealed  
installation Bluetooth unlock





# PARAMETERS



Brand: Omni

Name: drawer lock / cabinet door lock / electronic induction lock

Material: ABS environmental protection material

Product characteristics: waterproof / moisture-proof /  
high temperature / anti-corrosion, etc.

Dimensions: 62 x 57 x 20mm

Weight (without battery): 52g

Number of users: up to 45 users

HF emission: maximum 26dB $\mu$ A at 10m

Unlocking method: Bluetooth unlocking

Product life: at least 100,000 times open

Scope of application: single-open and double-open  
cabinet doors such as drawers and shoe cabinets