

4G Real Time Positioning Trajectory Tracking with Geo-fencing Pet GPS Tracker

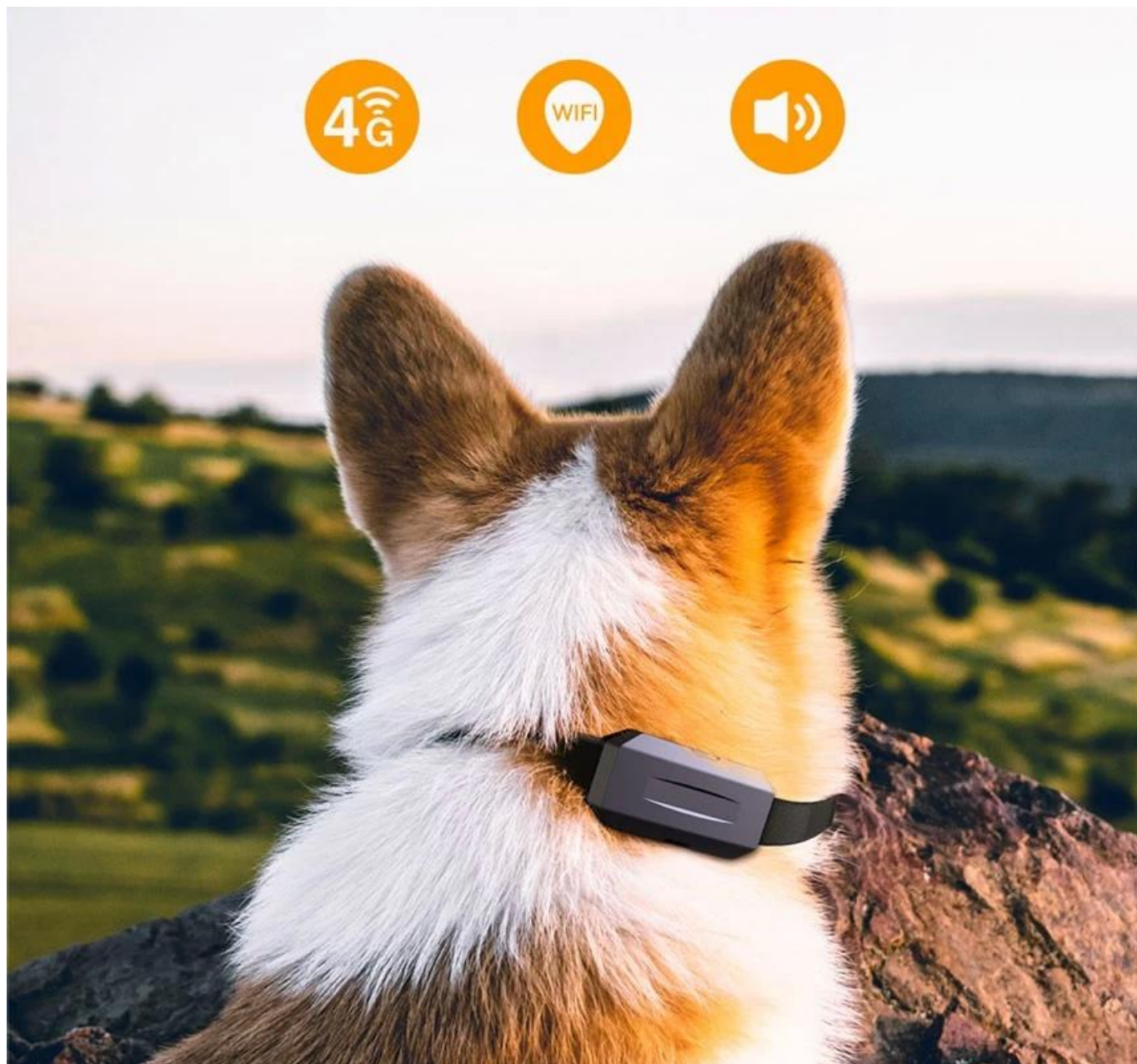
This pet tracker is designed for tracking and locating pets with advanced GPS tracking system with 4G.

The features of the pet gps tracker

1. 4G network remote control,
2. real-time GPS positioning,
3. Bluetooth communication
4. motion detection, and location tracking.

The pet gps tracker communicates with the backend server via the 4G network and with the mobile app via Bluetooth, enabling real-time monitoring of the pet's location.

The real-time information will be sent to pet tracking APP so that pet owners get all the notifications easily.



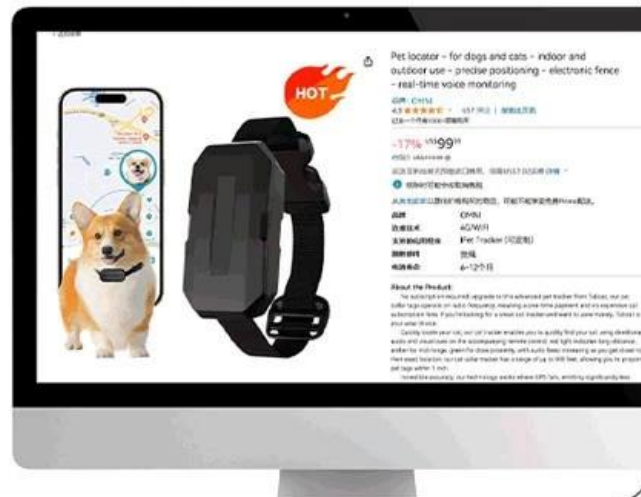
Sales Channels



Suitable for online shops, retail stores, supermarkets, and various other scenarios

Online Sales

Platforms like
E-commerce shops.



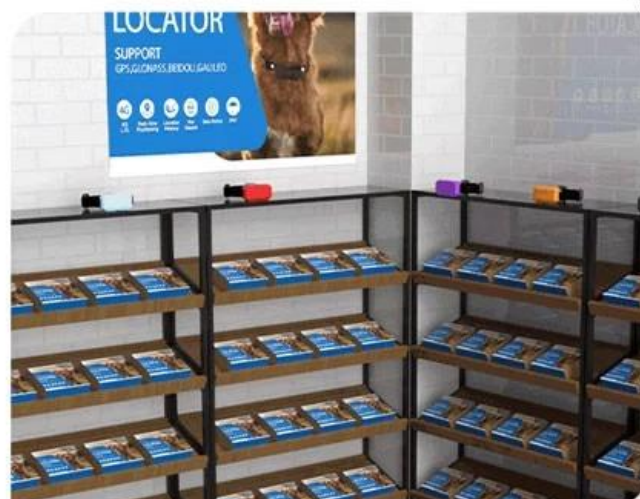
Offline Sales

Available in stores like
convenience shops,
pet stores, and retail
outlets.



Offline Sales

Sold at supermarket
counters.



Multi-Mode High-Precision Positioning

Supports GPS/Glonass/BeiDou/Galileo/LBS/Wi-Fi positioning tracking, pet's whereabouts, always in your hands.



Mobile Trajectory Inquiry

APP to track pet's movement within a certain period of time.



GEO Fence

The APP alerts pet owners if pets leave designated area.



IP67 Dustproof And Waterproof

Dustproof and waterproof, letting your pet enjoy freedom in any weather.



Customized Services

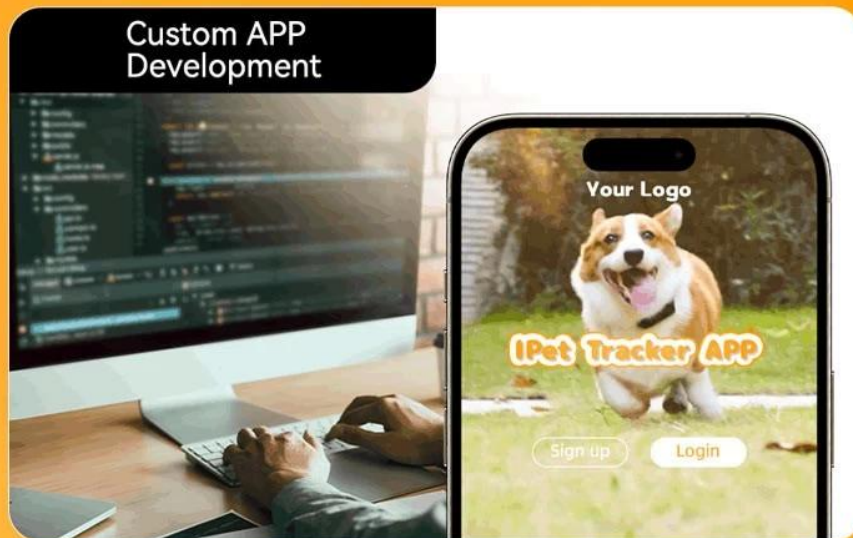


Offering customization services for Color, Logo, APP, and SIM Card.

Customization of logo and colors



Custom APP Development



Custom SIM Card Installation

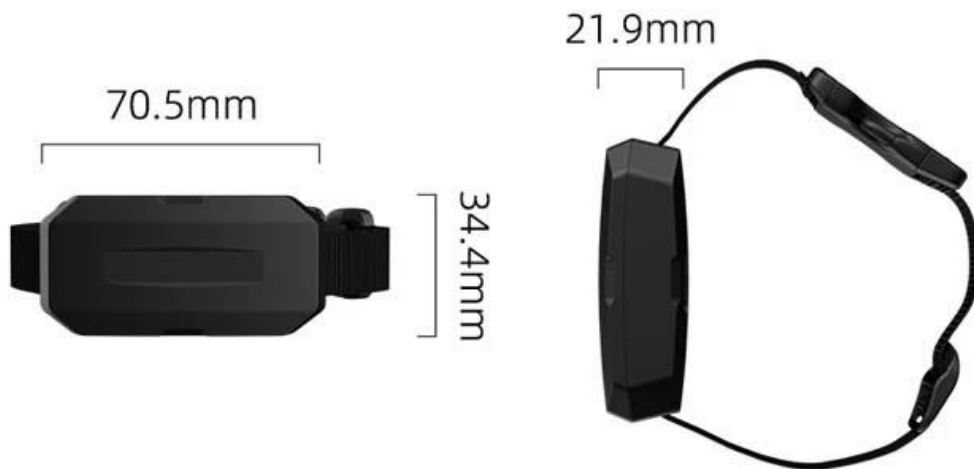


Embedded chip integration
(Non-removable)



Back cover SIM card installation
(Replaceable)

Product Specifications



Input Voltage	4.9-5.5VDC
Input Current	$\geq 1000\text{mA}(5\text{VDC})$
Battery Voltage/Capacity	3.7V/1200mAH
Battery Life	≥ 20 Hours
Operating Temperature	-20~+60°C
Waterproof Rating	IP67
Shell Material	PC+10%GF
Overall Dimensions	70.5mm × 34.4mm × 21.9mm
Lanyard Length	Adjustable up to 40cm
SIM Card	NANO-SIM

Patent Certification



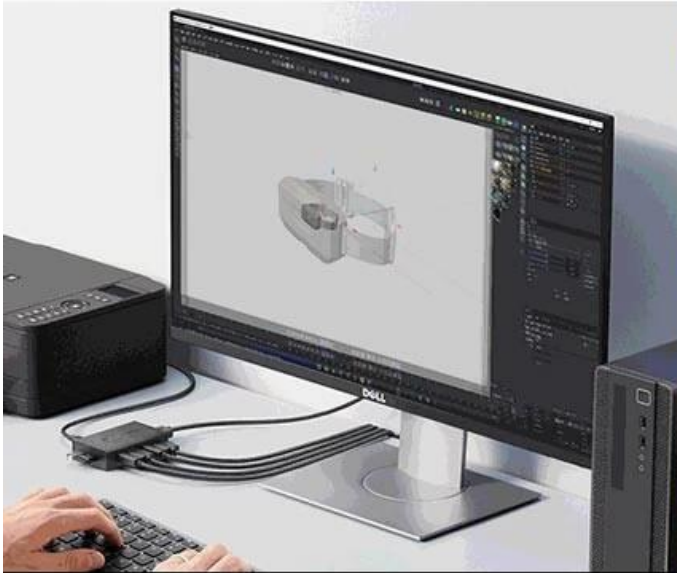
Certified by authoritative institutions, ensuring quality.



One - Stop Service



One-stop service from 0 to 1: from design and development to production and packaging, and from shipment to after-sales support.



Professional Design Team



Product Assembly Line



Packaging And Shipping



Professional After-Sales Team