

OMNI [Hidden Cabinet Locks](#)

1. Invisible design: no panel, no key hole.
2. Read (swipe) RFID card to Unlock. No mechanical keys needed.
3. Up to 50mm inductive reading distance, fast unlocking. Can be installed on thicker cabinet, locker, box, compartment.
4. Small in size, easy to hide. Asset can be well protected.
5. Easy installation. No need to drill holes, will not destroy the appearance of users' cabinets.
6. Vertically and horizontally universal locking design, flexible installation, fit kinds of cabinets.
7. Moisture-Proof ABS lock body shell, stainless steel latch and side catch, makes the lock stronger and more durable.
8. Low power consumption, 4 AA batteries last for 1 year.
9. Low battery alarm and automatic opening, plus external power port, you don't need to worry about being unable to unlock it if battery exhausted.

New trend

NEW SMART BLUETOOTH CABINET LOCK HELPS YOU

Keep ingenuity and innovate

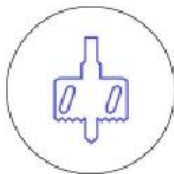


BLUETOOTH FAST CONNECTION MOBILE PHONE CONTROL

Thickened lock cylinder · Bluetooth unlock
Anti-lock dead



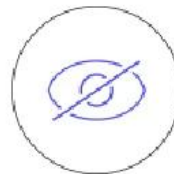
Suitable for drawers
single / double cabinet
doors, office cabinets



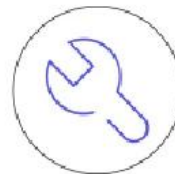
No holes



Stainless
steel bolt



Invisible
concealed



Easy
installation

THICKENED SOLID STAINLESS STEEL BOLT

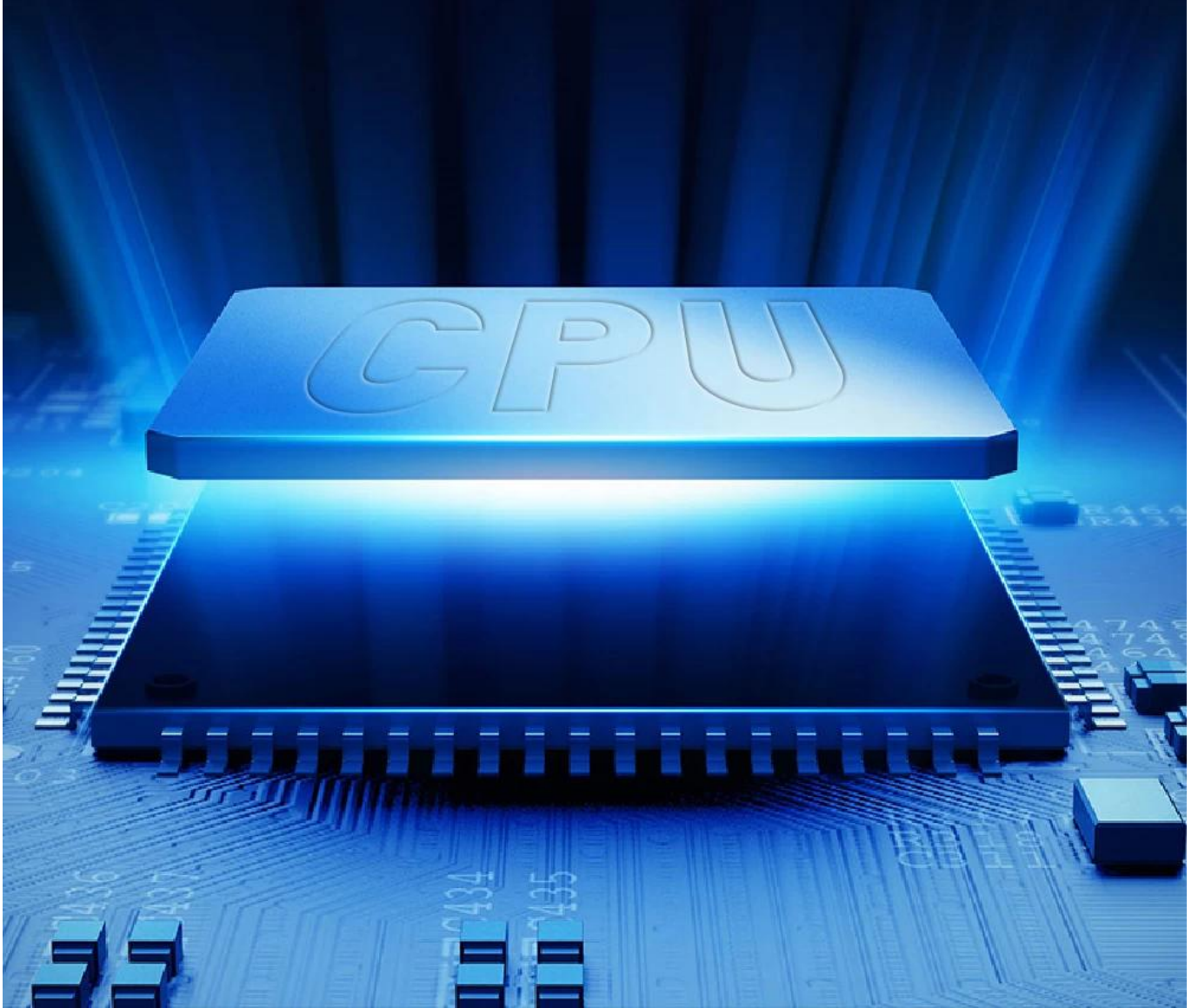
The safety factor of 8.5mm solid
steel bolt is comparable to safe



MATCH ITERATIVE CPU

ADOPT NEW ITERATIVE PROFESSIONAL
GRADE CPU BLUETOOTH 4.0 MODULE

FASTER DATA TRANSMISSION, RESPONSE TIME \leq 0.5S



LOW BATTERY WARNING AND PREVENTION SYSTEM

Alarm in low battery state and Bluetooth unlock to prevent locking, the lock is in normally open state



RICH APPLICATION SCENARIOS

Suitable for many types of furniture



Bedside table



Lockers



TV cabinet



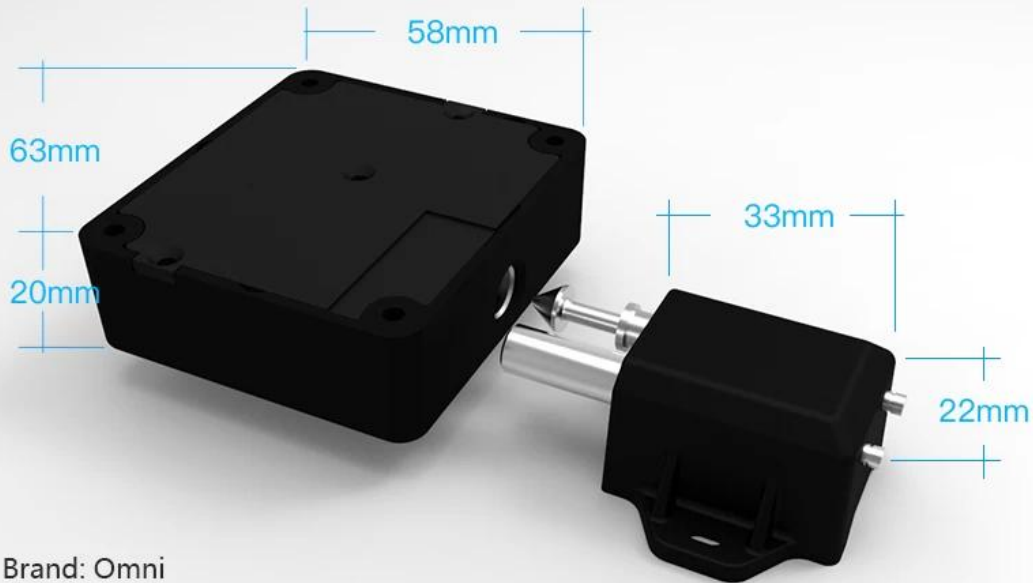
Office cabinet

MAINTAIN APPEARANCE

No punching concealed
installation Bluetooth unlock



PARAMETERS



Brand: Omni

Name: drawer lock / cabinet door lock / electronic induction lock

Material: ABS environmental protection material

Product characteristics: waterproof / moisture-proof /
high temperature / anti-corrosion, etc.

Dimensions: 62 x 57 x 20mm

Weight (without battery): 52g

Number of users: up to 45 users

HF emission: maximum 26dB μ A at 10m

Unlocking method: Bluetooth unlocking

Product life: at least 100,000 times open

Scope of application: single-open and double-open
cabinet doors such as drawers and shoe cabinets