



BLUETOOTH SMART CHAIN LOCK

S E C U R I T Y E V E R Y W H E R E

PVC surround	Alloy wire rope head	High-strength steel wire	Lock without key
-----------------	-------------------------	-----------------------------	---------------------



Thickened
wire rope



Alloy lock
cylinder



PVC
surround



Free
stretch

EXQUISITE WORKMANSHIP

OMNI Bluetooth cable lock,through QB/T 1001-2006, GB2155-2008
double standard test,guard your travels



B level lock



GB international
certification



QB Industry
standard certification



HOT

MULTI-APPLICATION SCENARIOS

MOTORCYCLE/EBIKE/BIKE/DOOR
ETC WIDELY USE



Motorcycle



Ebike



Bike



Scooter



Door

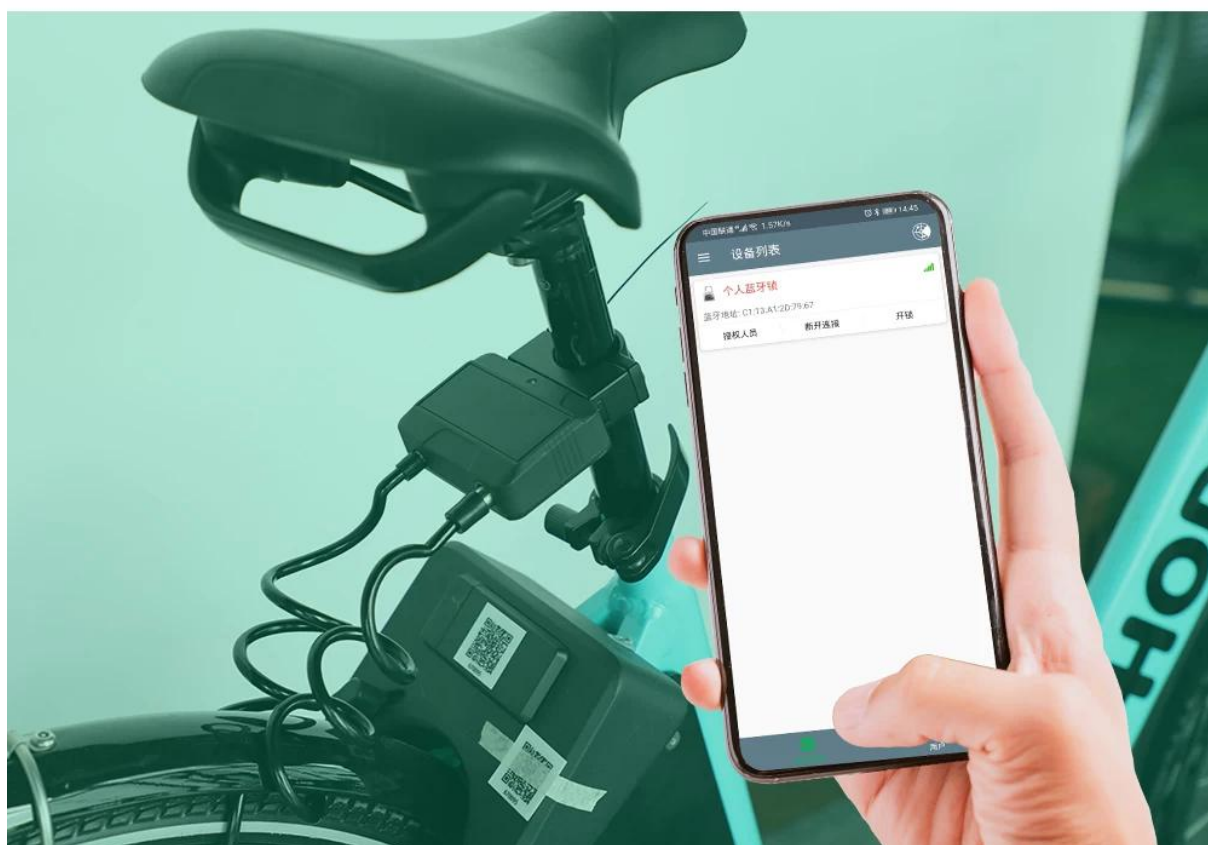


Baby stroller

NEW

APP CONTROL ONE STEP AHEAD

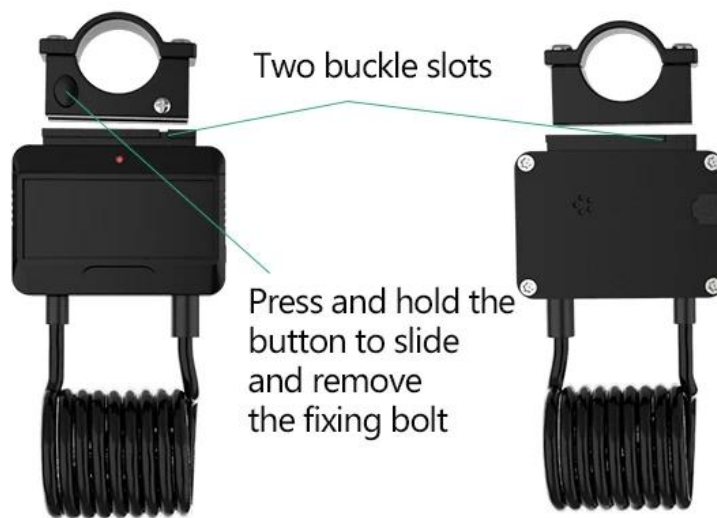
Bluetooth connection, fast unlock
rear time shows Power



HOT

DOUBLE FIXATION SLIDING AND DETACHABLE

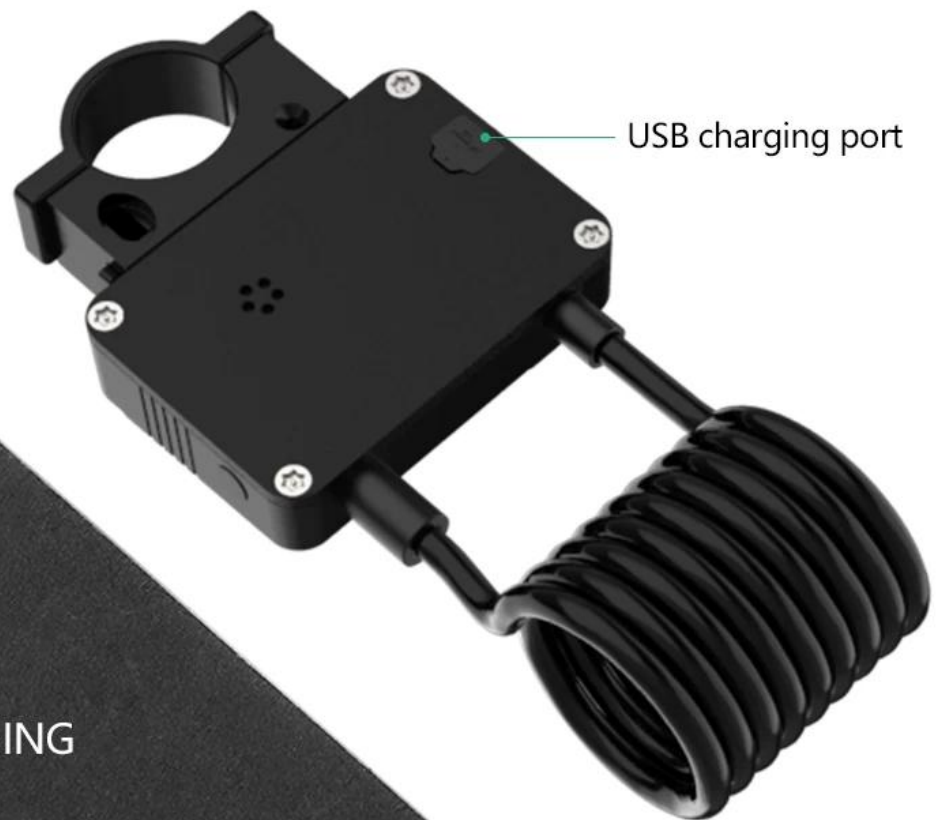
Two buckle grooves on the front and back are double fixed, more stable and strong



700mAh

USB FAST CHARGE

Built-in 700mAh polymer lithium battery
to meet daily needs,
USB fast charging, convenient and safe



ENDURANCE

Long battery life
90 days

CHARGING TIME

2~3 hours

MULTIPLE CHARGING MODES



OWN

SUPER WATERPROOF RIDE IN THE RAIN

Normally use in light rain, Waterproof: IP66



More than 100000+ testing

HOT

SHARE ANYTIME

REMOTE AUTHORIZATION

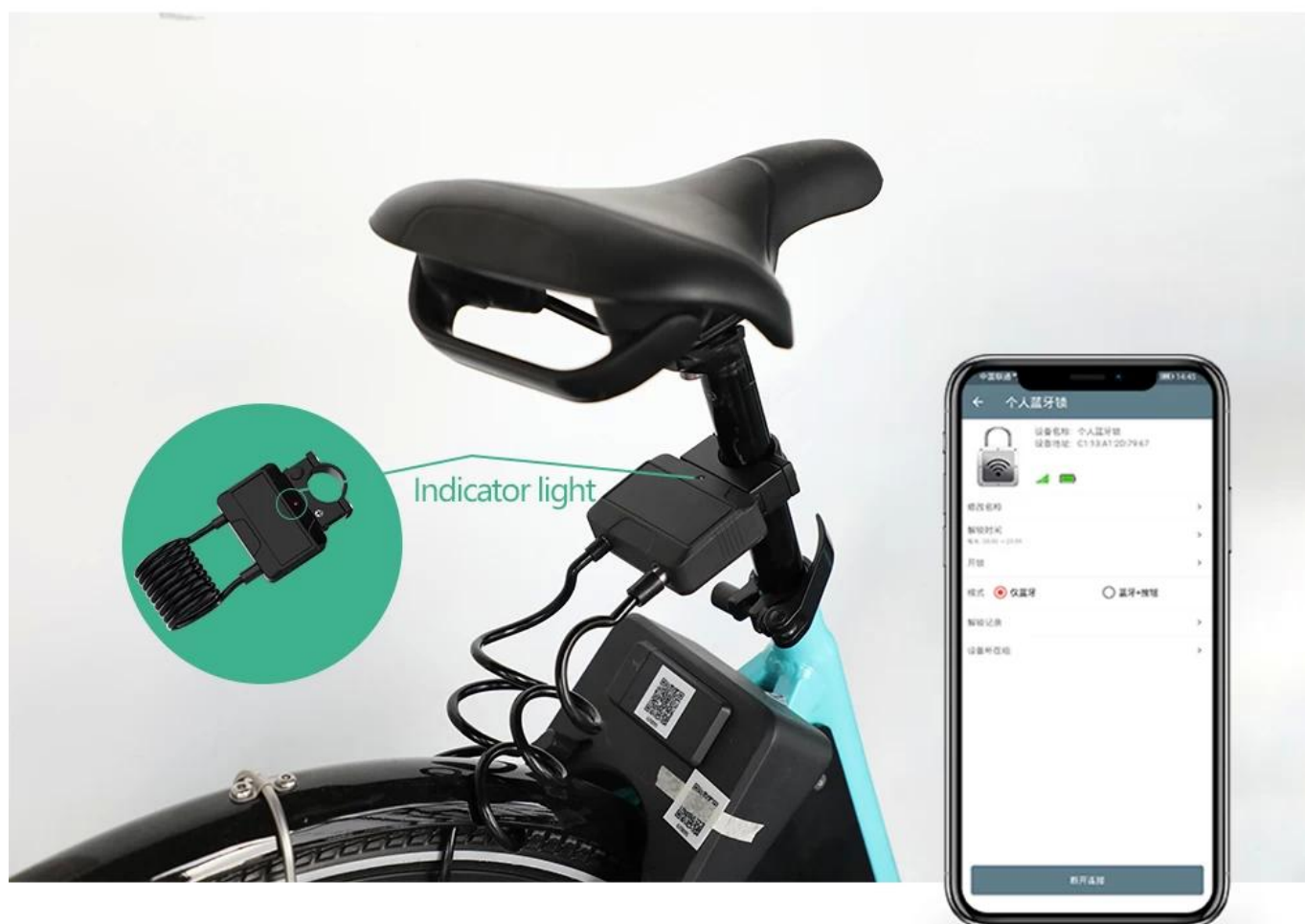
Share to family and friends, one device
happy everyone



NEW

AUTOMATIC ALARM SAFE AND WORRY-FREE

Abnormal movement, red indicator light flicker



Red indicator light alarm



Mobile phone
receive notify

SMART CABLE LOCK

THICKENED WIRE ROPE STURDY AND DURABLE



SUPPORT
CUSTOMIZATION

(6~18mm)

Thickness of steel wire and thick design
of leather case, tough and tough



STRENGTH
IMPROVEMENT



TOUGHNESS
IMPROVEMENT

6mm thickness



ALLOY WIRE ROPE HEAD

HIGH STRENGTH ANTI-THEFT

Alloy steel lock, sturdy, safer and more assured



Omni “XXXXXXXXXXXXXXXXXXXXXXXXXXXX” OMNI “XXXXXXXXXXXXXXXXXXXX”

Intelligent riding system solution

Sharing parking



The diagram illustrates the Smart bike lock system architecture. It shows a cycle of interaction between five components: User, Lock, Bike, Mobile platform, and Cloud server. The User interacts with the Lock, which is connected to the Bike. The Bike is connected to the Mobile platform, which in turn connects to the Cloud server. The Cloud server then connects back to the User, completing the cycle. The central text reads "Smart bike lock system".

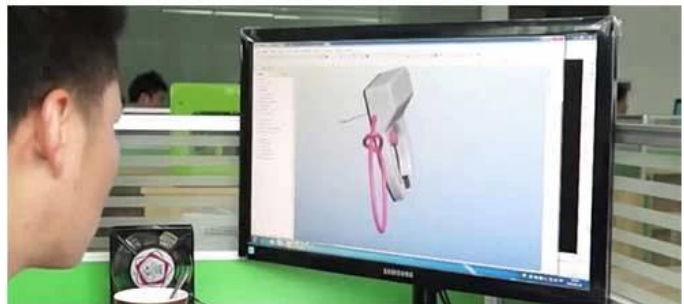


The strength of company

Sales team



Engineering R&D



Production plant

