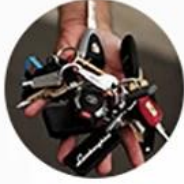


Your lock has the following hidden dangers

ARE YOU STILL NOT RESOLVED?



Too many keys, inconvenient to carry



Thief is easy to pry lock



Mechanical keys are easily damaged



File stolen



Lost key



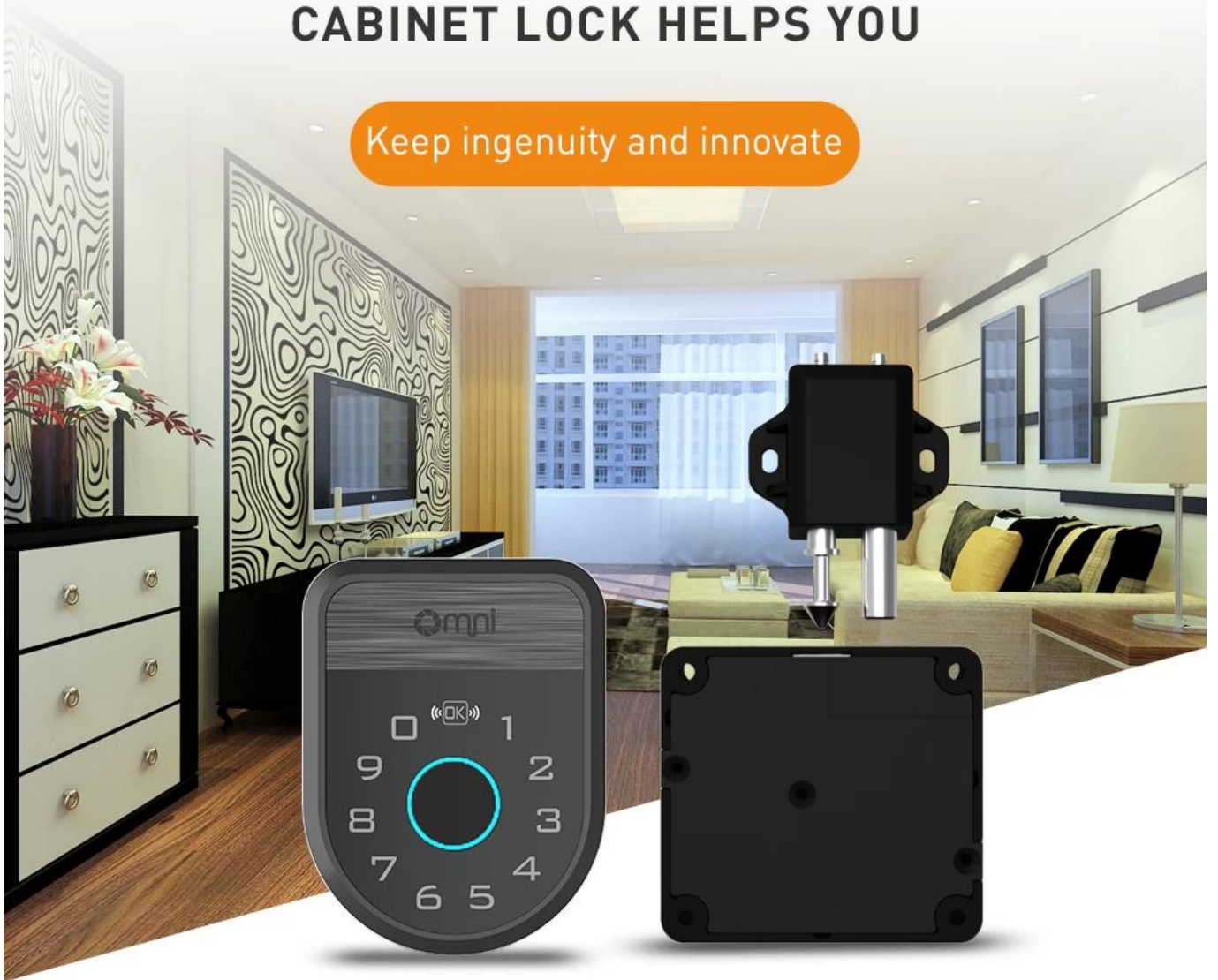
Employee turnover key



New trend

NEW SMART MULTI-FUNCTIONAL CABINET LOCK HELPS YOU

Keep ingenuity and innovate

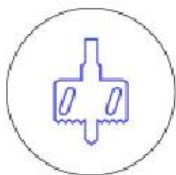


BLUETOOTH QUICK CONNECT FINGERPRINT UNLOCK

Magnetic card unlock · Bluetooth unlock
Fingerprint unlock



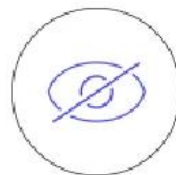
Suitable for drawers
single / double cabinet
doors, office cabinets



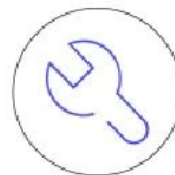
No holes



Stainless
steel bolt



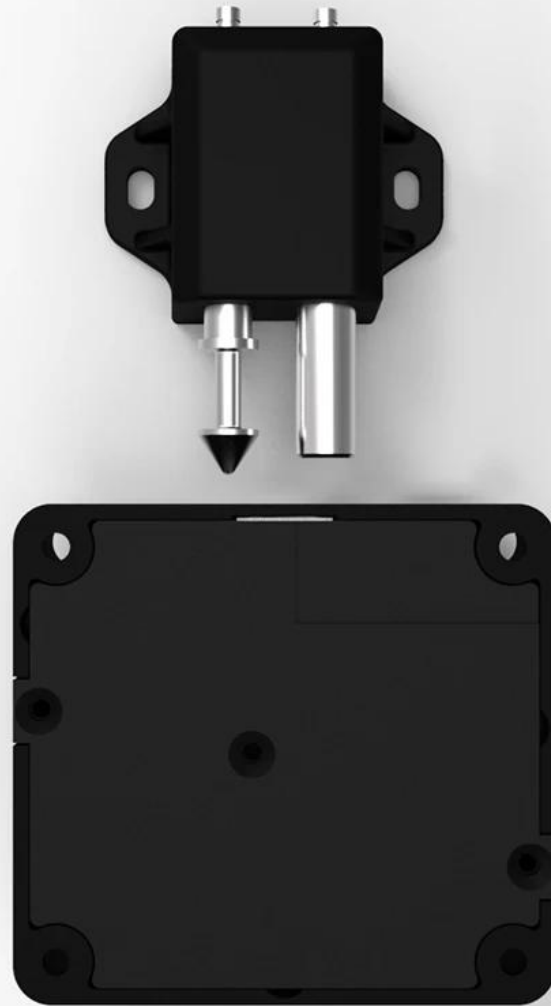
Invisible
concealed



Easy
installation

THICKENED SOLID STAINLESS STEEL BOLT

The safety factor of 8.5mm solid
steel bolt is comparable to safe



MULTIFUNCTIONAL SMART PANEL

One finger touch, easy to control

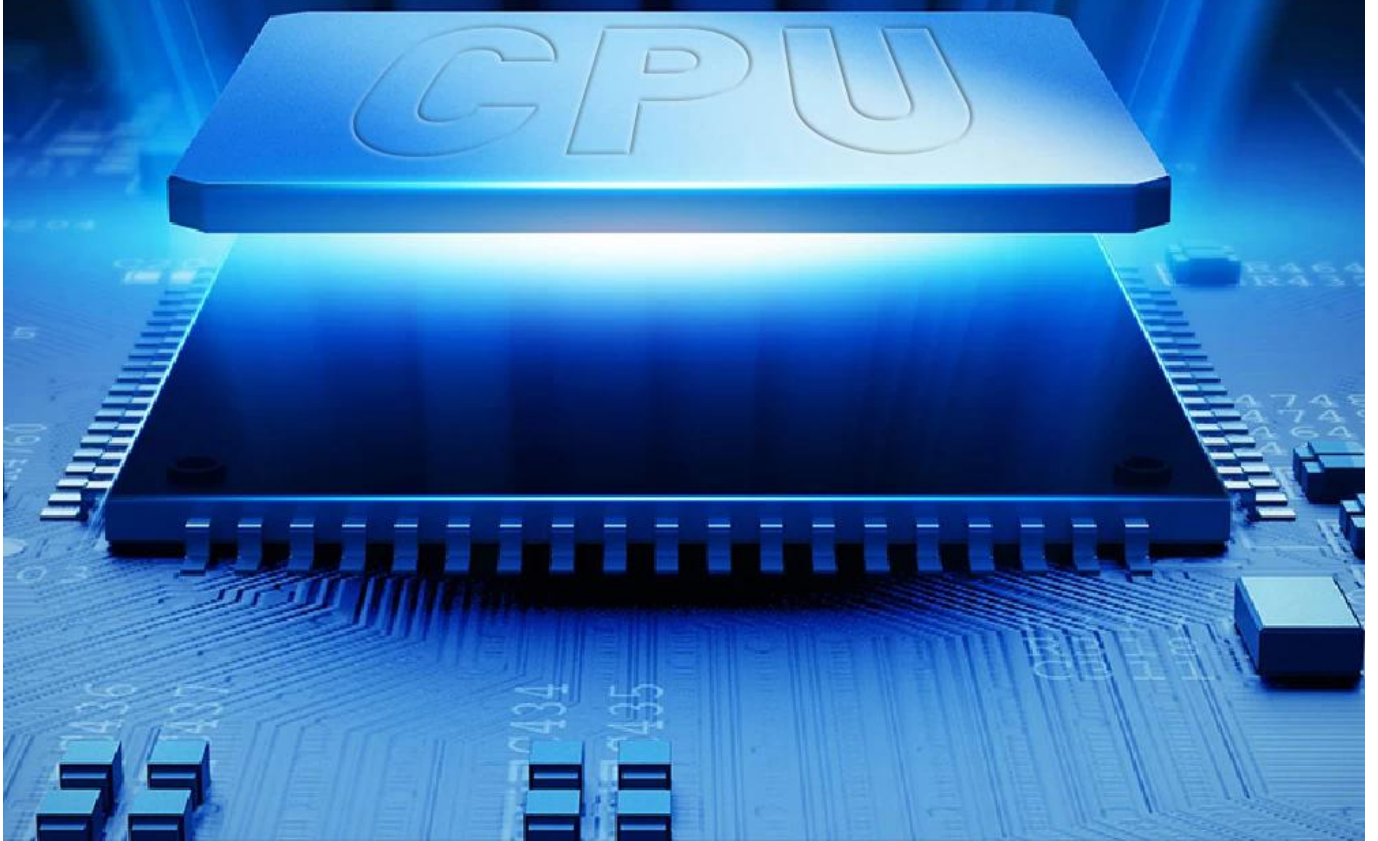
Password unlock, Fingerprint unlock
Bluetooth unlock, Mobile APP unlock



MATCH ITERATIVE CPU

ADOPT NEW ITERATION PROFESSIONAL
GRADE CPU BLUETOOTH 4.0 MODULE,
3D FINGERPRINT COLLECTION

FASTER DATA TRANSMISSION, RESPONSE TIME $\leq 0.5S$



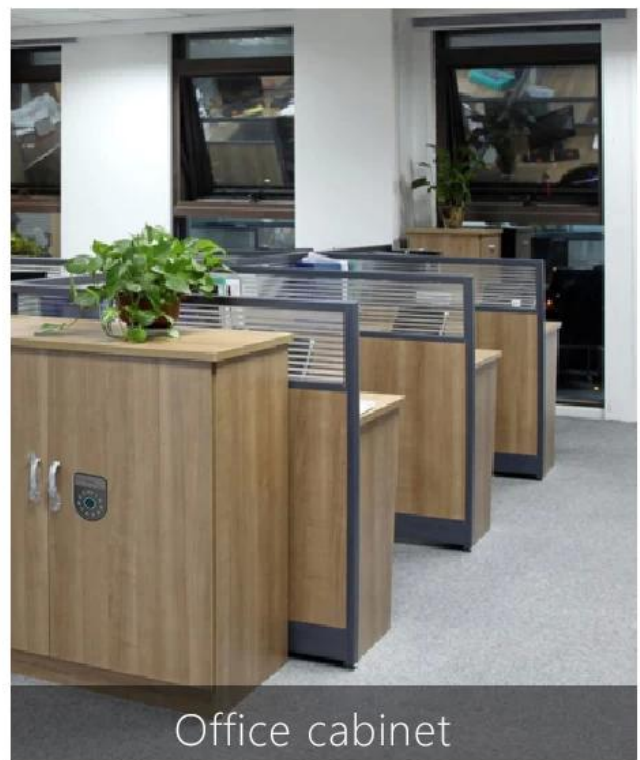
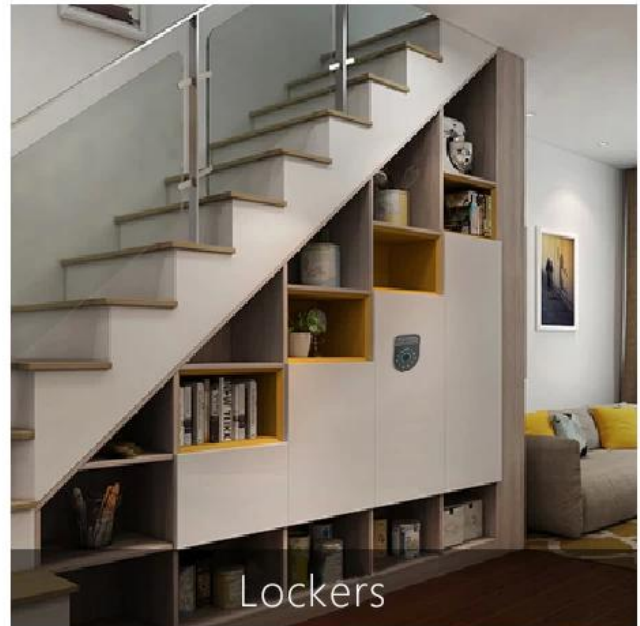
LOW BATTERY WARNING AND PREVENTION SYSTEM

Alarm in low battery state and prevent locking after unlocking, the lock is in normally open state



RICH APPLICATION SCENARIOS

Suitable for many types of furniture

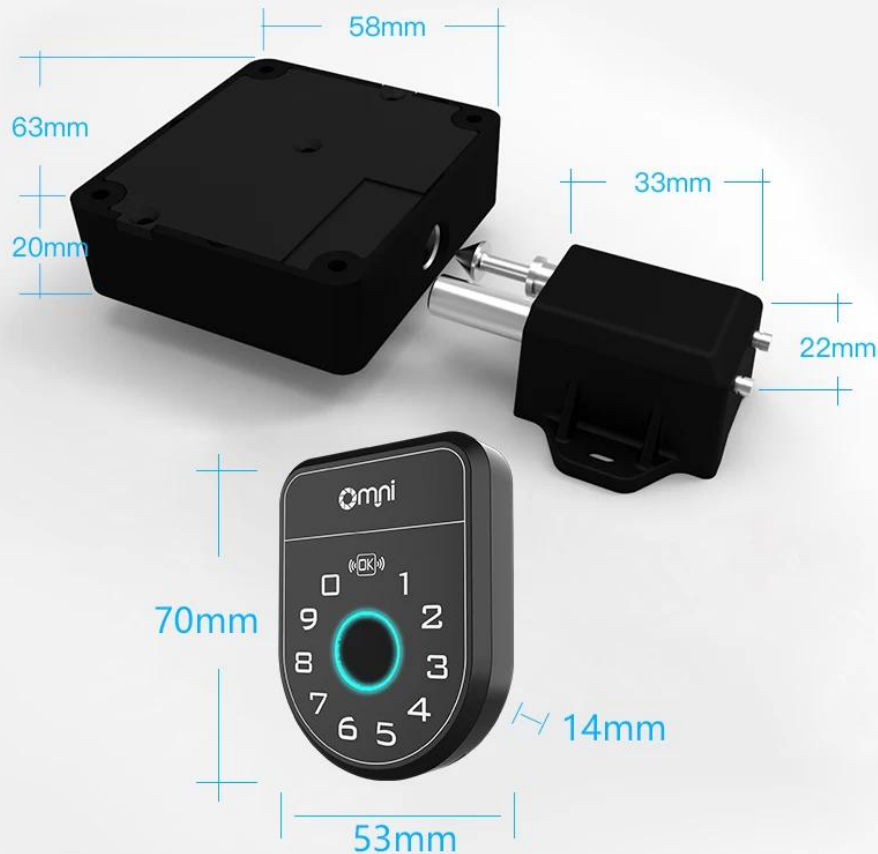


MAINTAIN APPEARANCE

Small panel, quick fingerprint opening



PARAMETERS



Brand: OMNI

Name: drawer lock / cabinet door lock / electronic induction lock

Material: ABS environmental protection material

Product characteristics: waterproof / moisture-proof / high temperature / corrosion resistance, etc.

Number of users: up to 45 users
HF: Maximum 26dB μ A at 10m

Unlocking method: Bluetooth unlocking, password unlocking, fingerprint unlocking
Product life: at least 100,000 openings

Scope of application: single-open and double-open cabinet doors such as drawers and shoe cabinets

