



Temperature sensor

4-20mA | 0-5v | 0-10v signal output



Free maintenance
of genuine products

IP65 high protection enclosure

The equipment can also
work normally under severe
environment such as dust,
rain and snow



Quality probe

When the temperature drops in high humidity situation, condensation will occur. Water drops adhere to the sensor, which seriously shortens the service life of the probe. Our company has solved this problem from the material.



Waterproof



Moisture-proof



condensation prevention

Easy to deal with various occasions

Applicable to agricultural shed, underground pipe gallery, warehouse, industrial workshop and machine room



Industrial sensor platform

OMNI-IoT Complete Solution Provider



- IoT devices
- APP development customization
- Intelligent background management
- Complete solution development

Support APP customization

Monitoring, reporting, storage and other one-stop services to easily create an independent and exclusive online cloud platform.



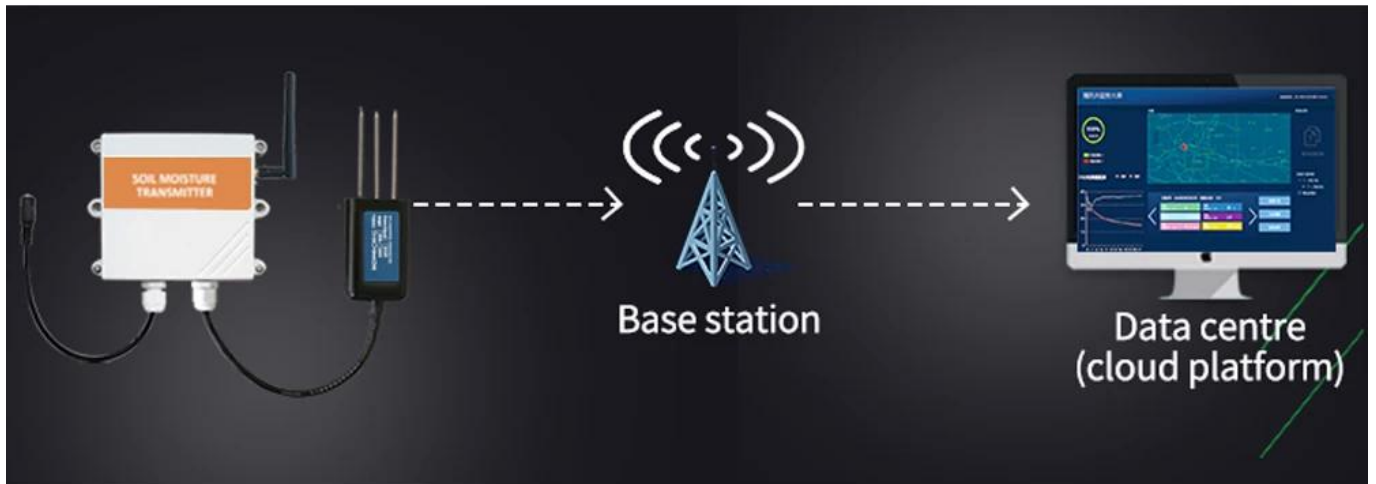
SMS alert



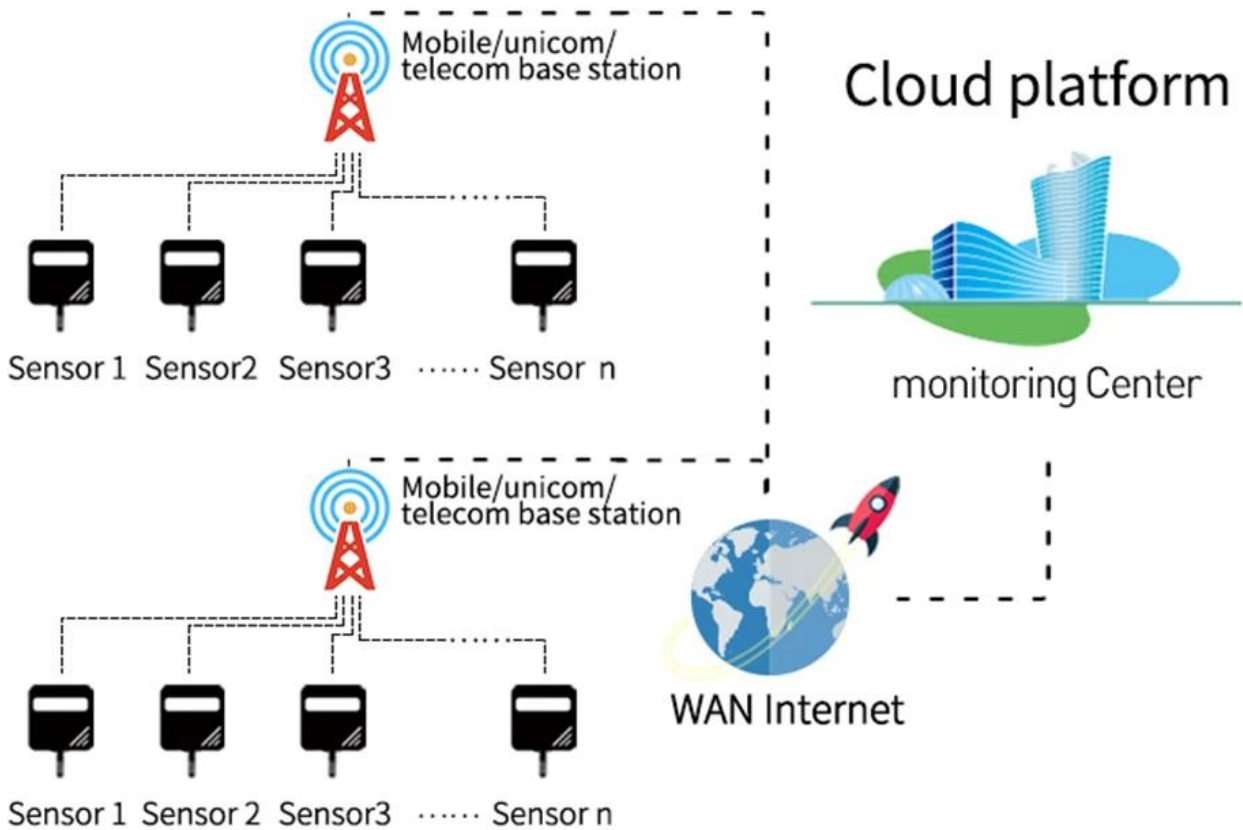
Mail alert



no wiring

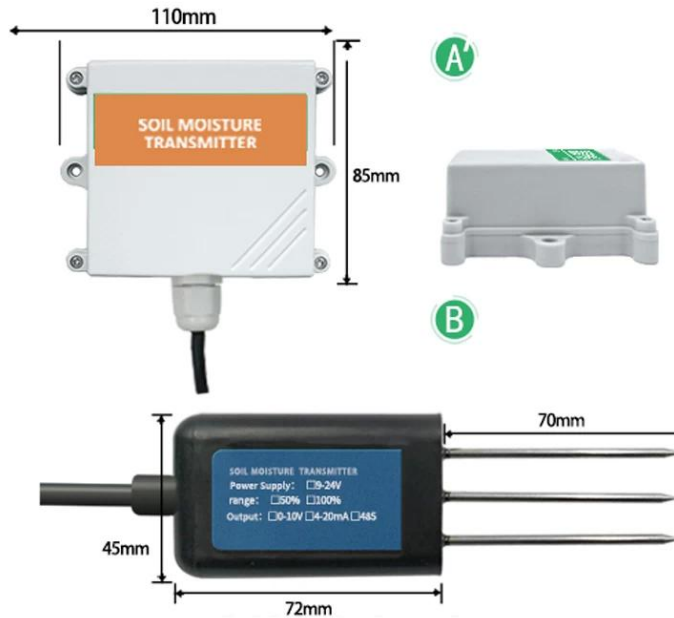


DATE CAN BE REPORTED AUTOMATICALLY



Product parameters

NB-IoT



| Parameter | content |
|-------------------------------|--|
| Power supply | Built-in lithium battery |
| Battery working time | ≥3years |
| Reporting interval | ≥10mins |
| Communication system | 2G/3G/4G/BN-IoT |
| Response time | ≤15s |
| Protection level | Control box IP67/senor IP68 |
| Installation method | all buried or probes are fully inserted into the measured medium |
| temperature measurement range | -40°C-80°C (customizable) |
| moisture measurement range | ±5°C |
| moisture measurement accuracy | reading±3% (0-53% within the scope) |
| | reading±3% (53%-10% within the scope) |

GPRS/4G

| Parameter | content |
|----------------------------------|---|
| DC power supply | 9V-24V DC |
| product power consumption | <0.4W |
| transmission interface | GPRS/4G wireless signal transmissio |
| setting up interface | GPRSnetwork configuration GSM SMS configuration |
| Signal support | 2G/3G/4G/BN-IoT |
| Installation method | all buried or probes are fully |
| Protection level | inserted into the measured mediumIP68 |
| Response time | ≤1s |
| moisture measurement range | 0-100% |
| moisture measurement accuracy | reading±3% (0-53% within the scope) |
| | reading±3% (53%-10% within the scope) |
| temperature measurement range | -40°C-80°C |
| temperature measurement accuracy | ±5°C |



