



180 DEGREE
ADJUSTABLE
ADJUSTABLE
PHONE HOLDER

ALUMINUM ALLOY



LIGHT WEIGHT

ANODIZING PROCESS

The use of aluminum alloy anodizing process has greatly improved the appearance, the moisture resistance and the corrosion of the holder

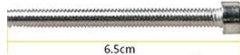


BEST RIDING
COMPANION

The perfect mobile phone holder



Straight length 13cm, total screw length 5.5cm



6.5cm

Our shop buy 6.5cm length stem screw, can work with most of the bicycles.



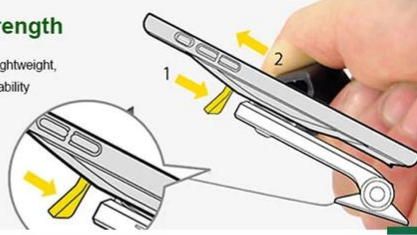
5.5cm



3M sticker 7cm

1 Lightweight high strength

Phone Holder use super-tough nylon, lightweight, high strength, good toughness and durability



2 Four corners mechanical lock pawl

Patented tetragonal symmetry locking pawl structure, not only can be firmly fixed phones, but also effectively protect the phone most likely to collide with the scraping of the corner positions to avoid injury

3 Light weight high tensile

Knob with a serrated non-slip, with the tightening knob and anti-off nut, firmly lock the retractable pawl to ensure that the future is completely locked, as long as no manual unlocking, no matter how bumpy are no easy to release, reach the true cross-country level



If you don't want to throw away your phone case, can also use your own phone case, or no case adapt to your mobile, you can buy our universal phone case additionally, stick to your phone case, also very strong...



4 Outside their versatility

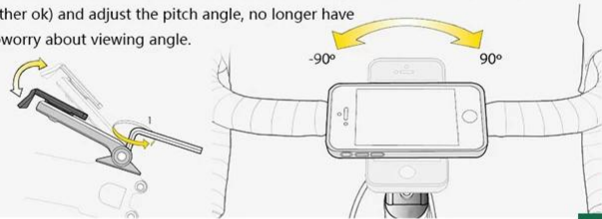
Corners pawl telescopic adjustable to support the market most 3.5-7 inch smartphone market is the most versatile mobile phone holder

Note:

- 1.Mobile length between 115-150mm, width between 58-90mm thickness within 12mm all suitable (can use 7-inch mobile phone must meet the above requirements)
- 2.If the phone's four corners arc is too big, the phone holder is unstable, please buy carefully.

5 Universal joint adjustable horizontal and vertical

Flexible solid universal joint can be rotated 360 degrees (horizontal and vertical either ok) and adjust the pitch angle, no longer have toworry about viewing angle.



6 Install flexibility

With corresponding holders and screws, the cellphone holder can be mounted on the head tube top.



□□□□□□ □□□□□□

- (□□□□□□) □□□□□□ □□□ :□□□□□□ □□□□□□□□ □□□□□□□□ •
- □□□□□□ □□□□□□ □□□□□□ □□□□□□ □□□□□□ :□□□□□□ □□□□ □□□□ •
- □□□□□□ •: OCH1
- □□□□□□□□ □□□□□□ / □□□□□□□□ / □□□□□□□□□□□□ □□□□□□ :□□□□□□ □□□□□□ □□□□□□ :□□□□□□ □□□□□□ •
- 120 :□□□□□□ □□□□ □□□□ •G
- □□□□□□□□ :□□□□□□□□ □□□□□□
- 90-58 □□□□ □□□□□□□□ □□□□ :□□□□□□□□ □□□□mm
12 □□□□□□ □□□□□□□□ □□□□mm
- □□□□□□□□ □□□□□□ □□□□□□ :□□□□□□□□ □□□□□□□□
- □□□□□□ □□□□ □□□□□□ :□□□□□□□□ □□□□□□□□ •

180-115 □□□□ □□□□□□□□ □□□□mm

HOW TO SET UP

STEP 1



Release the original bead tube cap screw by allen key.

STEP 2

Use M6 silver screw to fix the holder on top of bicycle head tube, and tighten the screws.



Install the phone holder on the stem, adjust the phone holder degree, lock the nut.

STEP 3



